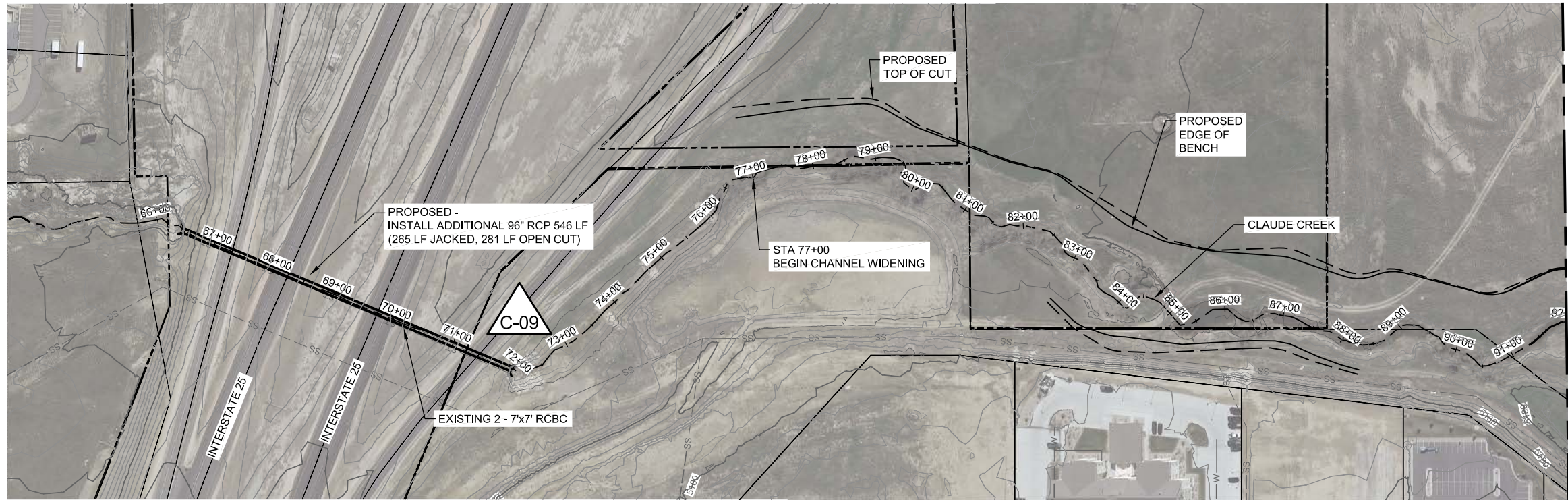


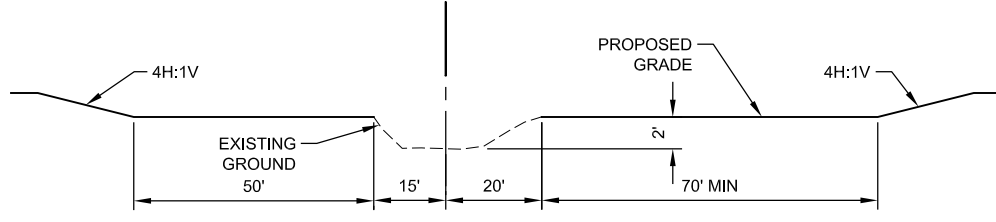
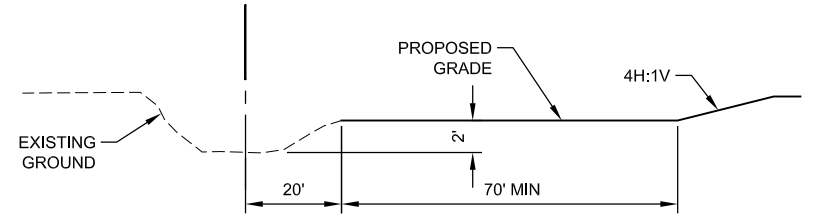
Appendices A through E and G are provided on the attached CD

Appendix F
Drawings



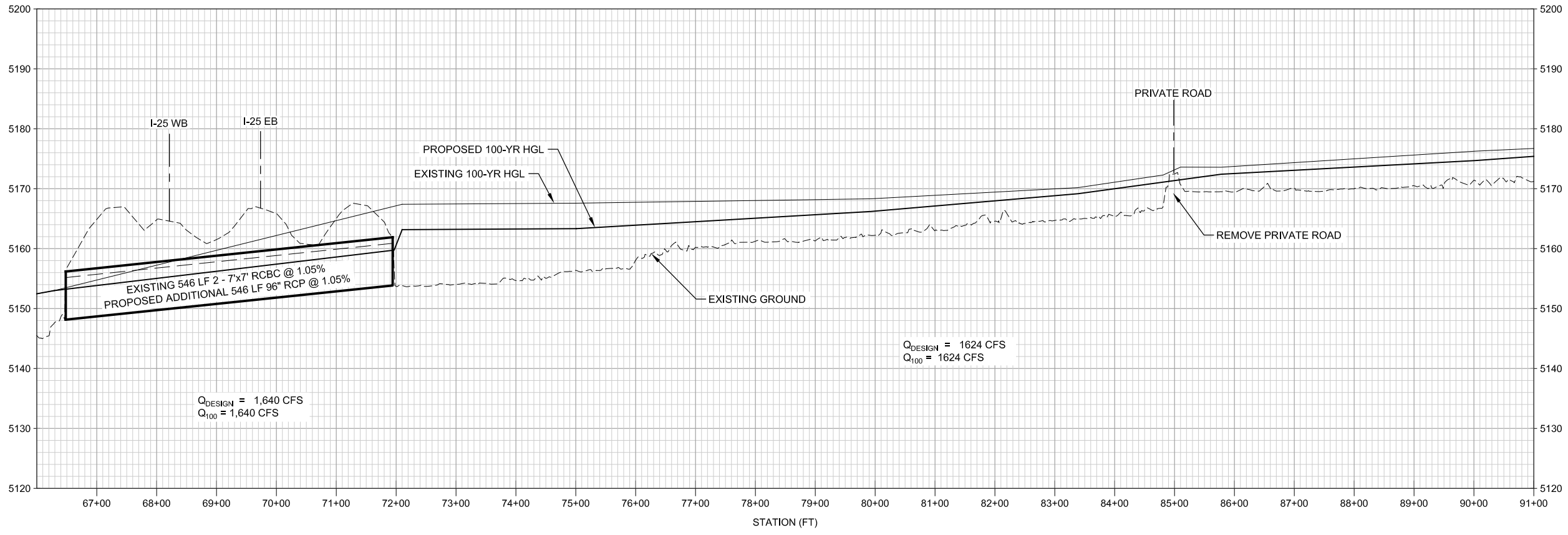
SEE SHEET 2 OF 3

PLAN



TYPICAL WETLAND BOTTOM CHANNEL

TYPICAL WETLAND BOTTOM CHANNEL



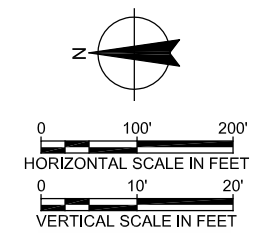
PROFILE

Legend

- City Limits
- Design Point C-09
- Sanitary Sewers (SS)
- Water (W)
- Existing Storm Sewer (ST)
- Existing Parcel
- Existing Storm Manhole
- Existing Storm Inlet
- Proposed Storm Sewer (ST)
- Proposed Storm Manhole
- Existing Contours
- Proposed Contours

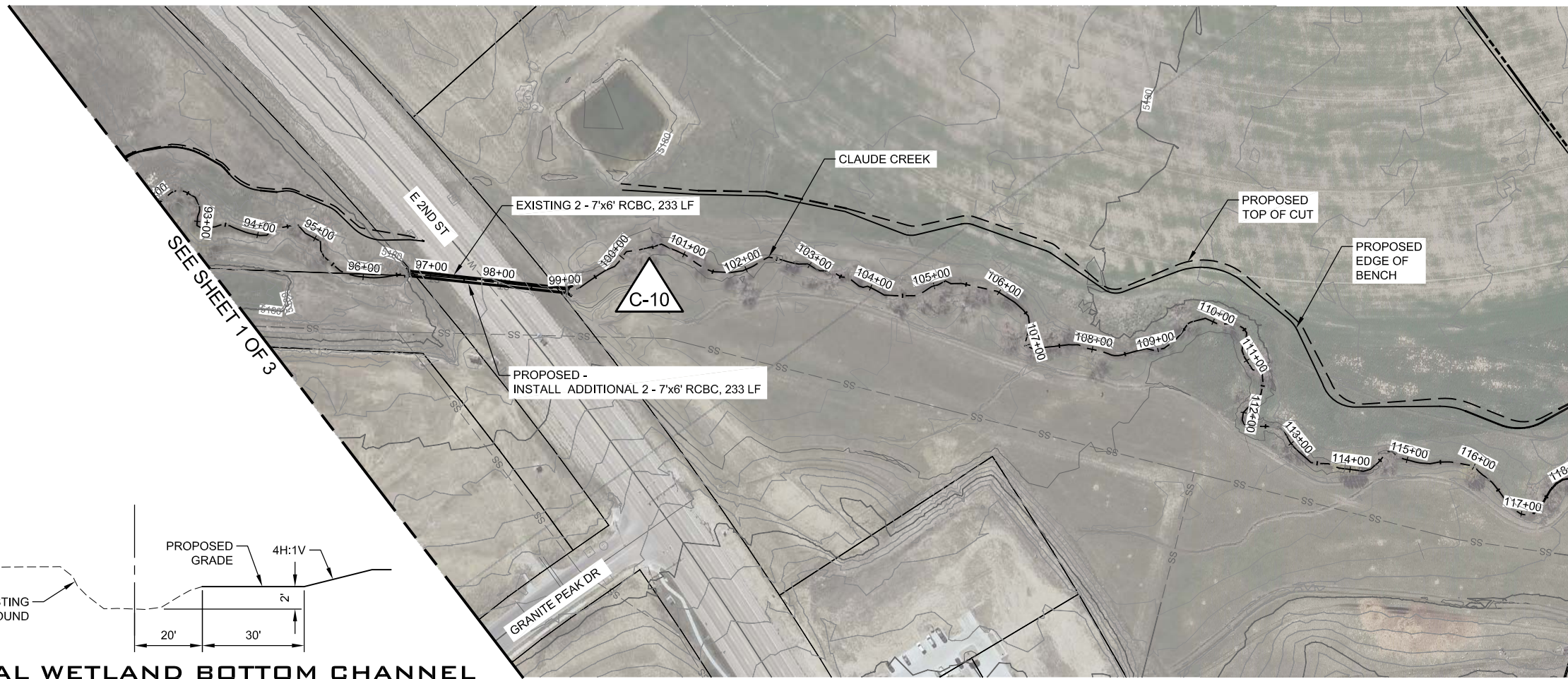
FIS Flood Zone

- A, AE, AO
- 0.2 Percent
- AE, Floodway



CASPER SWMMP PROJECT
CASPER, WYOMING

CLAUDE CREEK
PROPOSED
IMPROVEMENTS



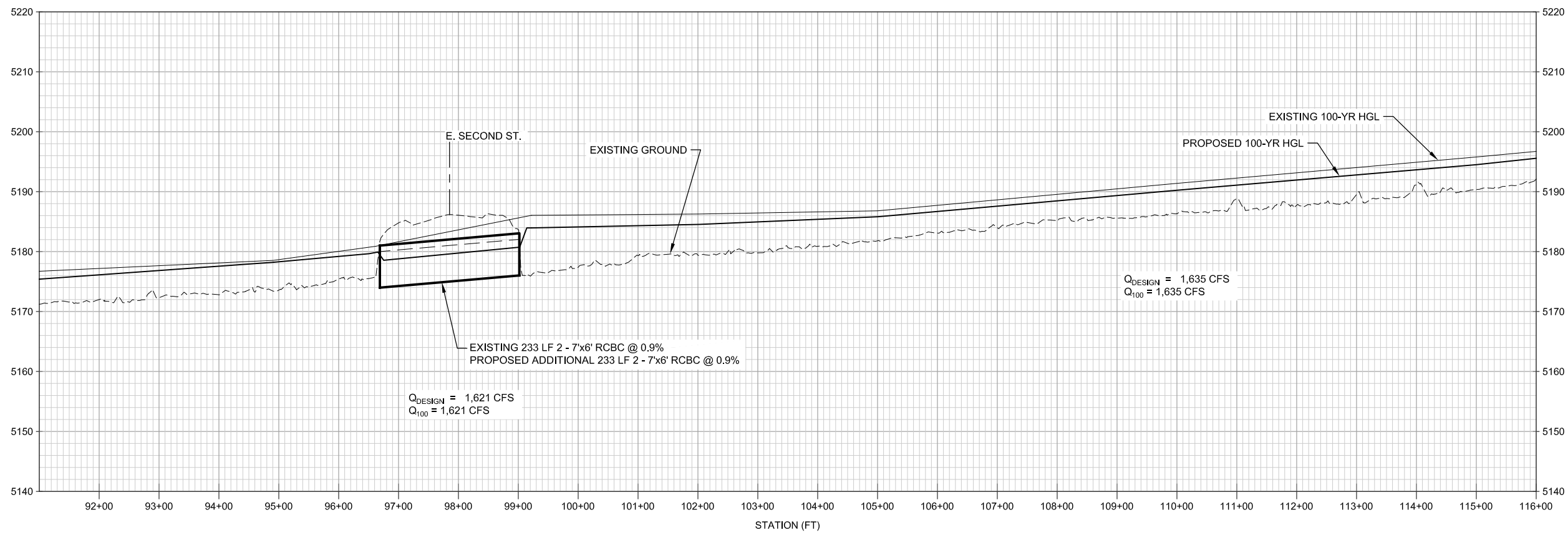
SEE SHEET 3 OF 3

TYPICAL WETLAND BOTTOM CHANNEL

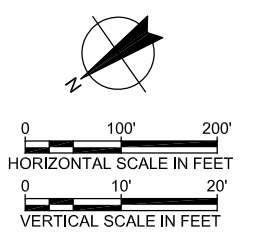
STA 93+30 TO STA 95+70
 TRANSITIONS: STA 81+00 TO STA 82+50, STA 84+30 TO STA 84+90, STA 91+70 TO 93+00
 LEFT BANK TRANSITIONS TBD BY GRADING
 NOT TO SCALE

PLAN

- #### Legend
- City Limits
 - Design Point
 - Sanitary Sewers
 - Water
 - Existing Storm Sewer
 - Existing Parcel
 - Existing Storm Manhole
 - Existing Storm Inlet
 - Proposed Storm Sewer
 - Proposed Storm Manhole
 - Existing Contours
 - Proposed Contours
- #### FIS Flood Zone
- A, AE, AO
 - 0.2 Percent
 - AE, Floodway



PROFILE



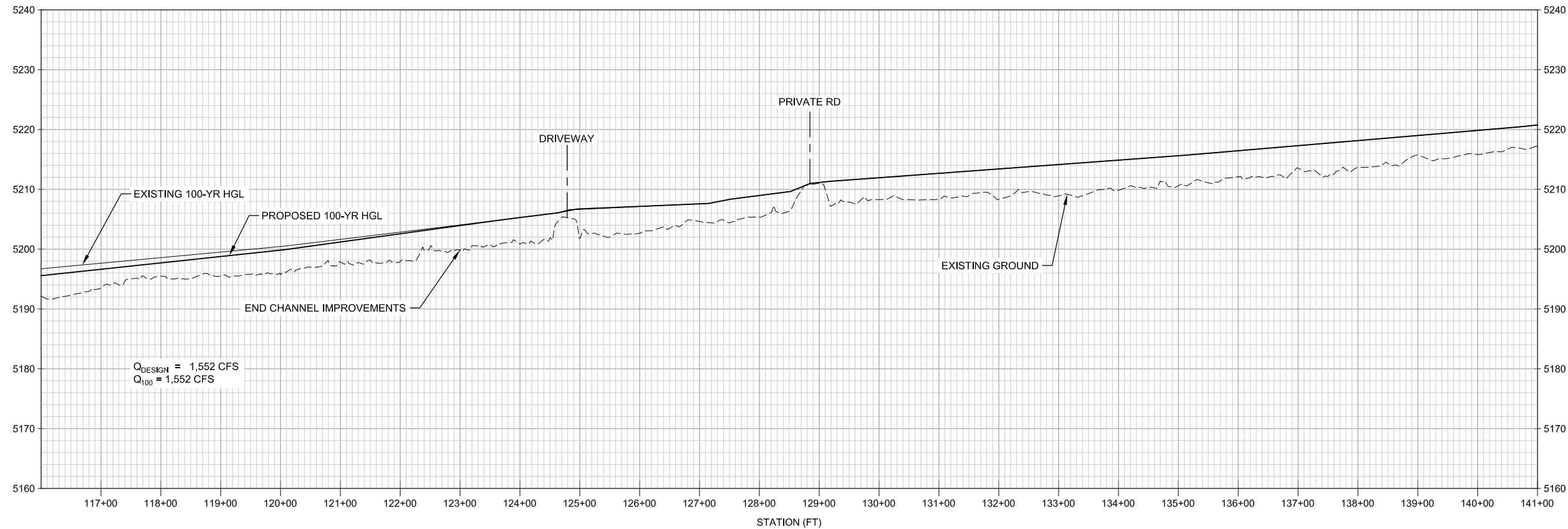
CASPER SWMP PROJECT
 CASPER, WYOMING

**CLAUDE CREEK
 PROPOSED
 IMPROVEMENTS**

SEE SHEET 2 OF 3



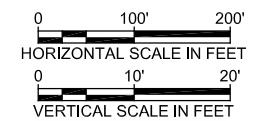
PLAN



PROFILE

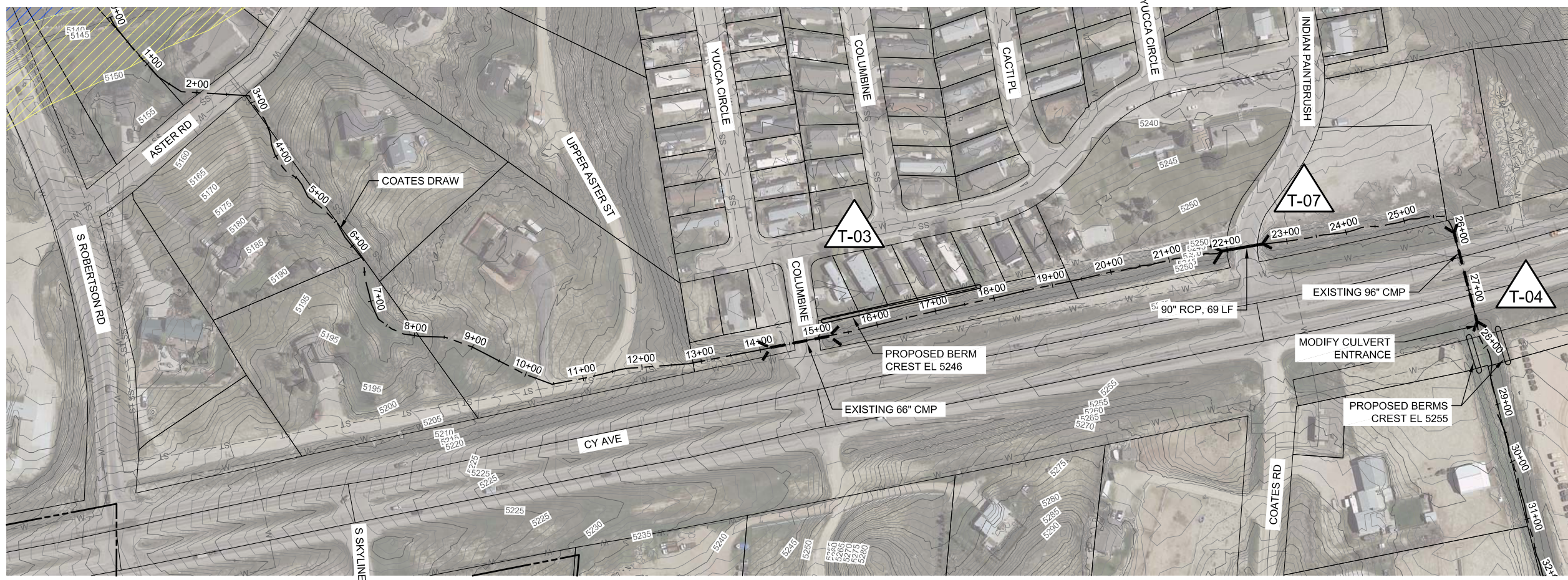
Legend

- City Limits
 - Design Point
 - Sanitary Sewers
 - Water
 - Existing Storm Sewer
 - Existing Parcel
 - Existing Storm Manhole
 - Existing Storm Inlet
 - Proposed Storm Sewer
 - Proposed Storm Manhole
 - Existing Contours
 - Proposed Contours
- FIS Flood Zone
- A, AE, AO
 - 0.2 Percent
 - AE, Floodway

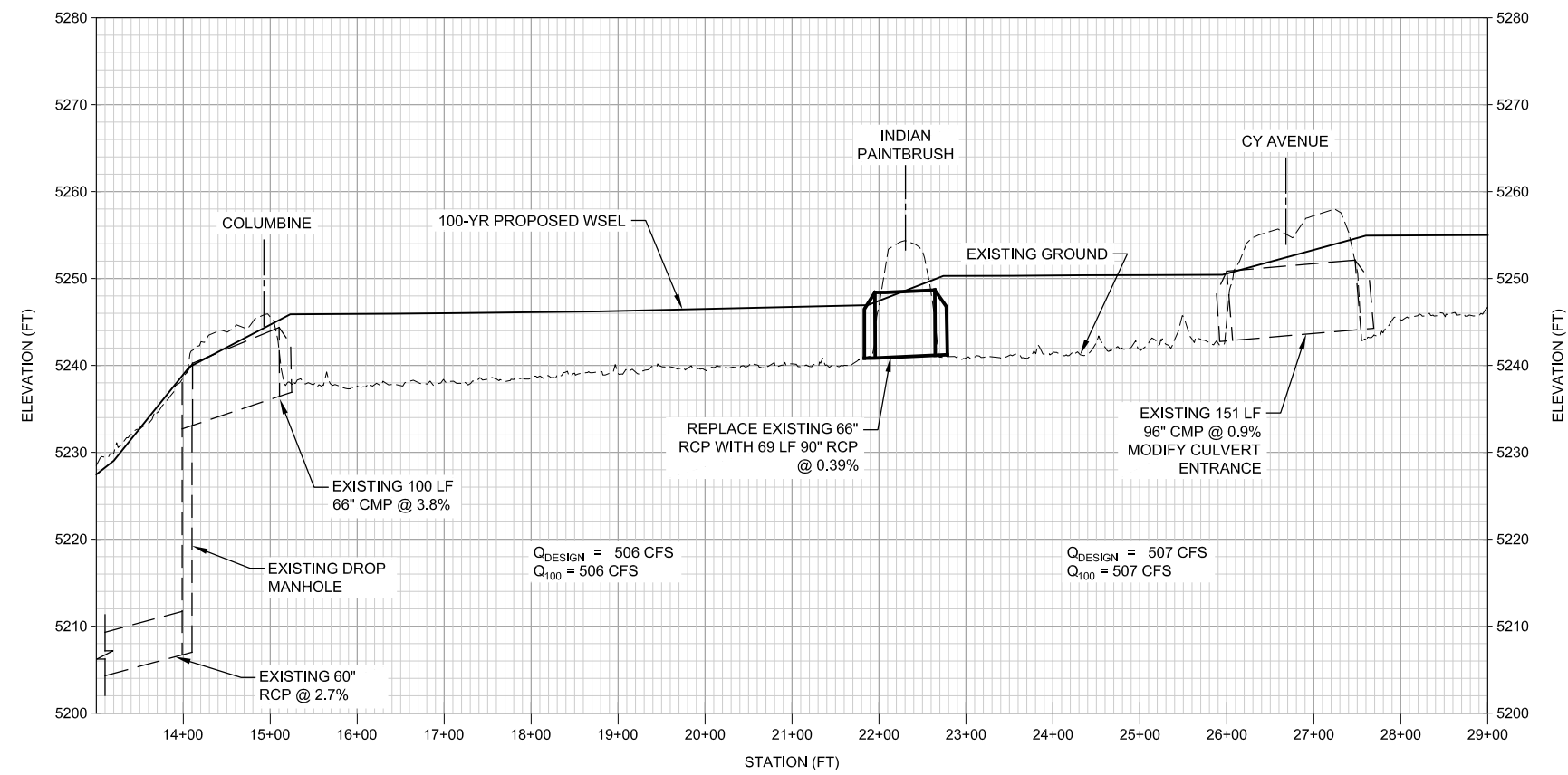


CASPER SWMP PROJECT
CASPER, WYOMING

**CLAUDE CREEK
PROPOSED
IMPROVEMENTS**



PLAN



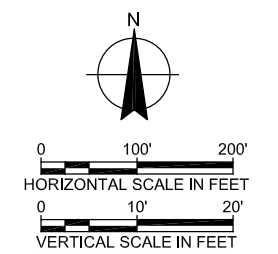
PROFILE

Legend

- City Limits
- Design Point C-09
- Sanitary Sewers
- Water
- Existing Storm Sewer
- Existing Parcel
- Existing Storm Manhole
- Existing Storm Inlet
- Proposed Storm Sewer
- Proposed Storm Manhole
- Existing Contours
- Proposed Contours

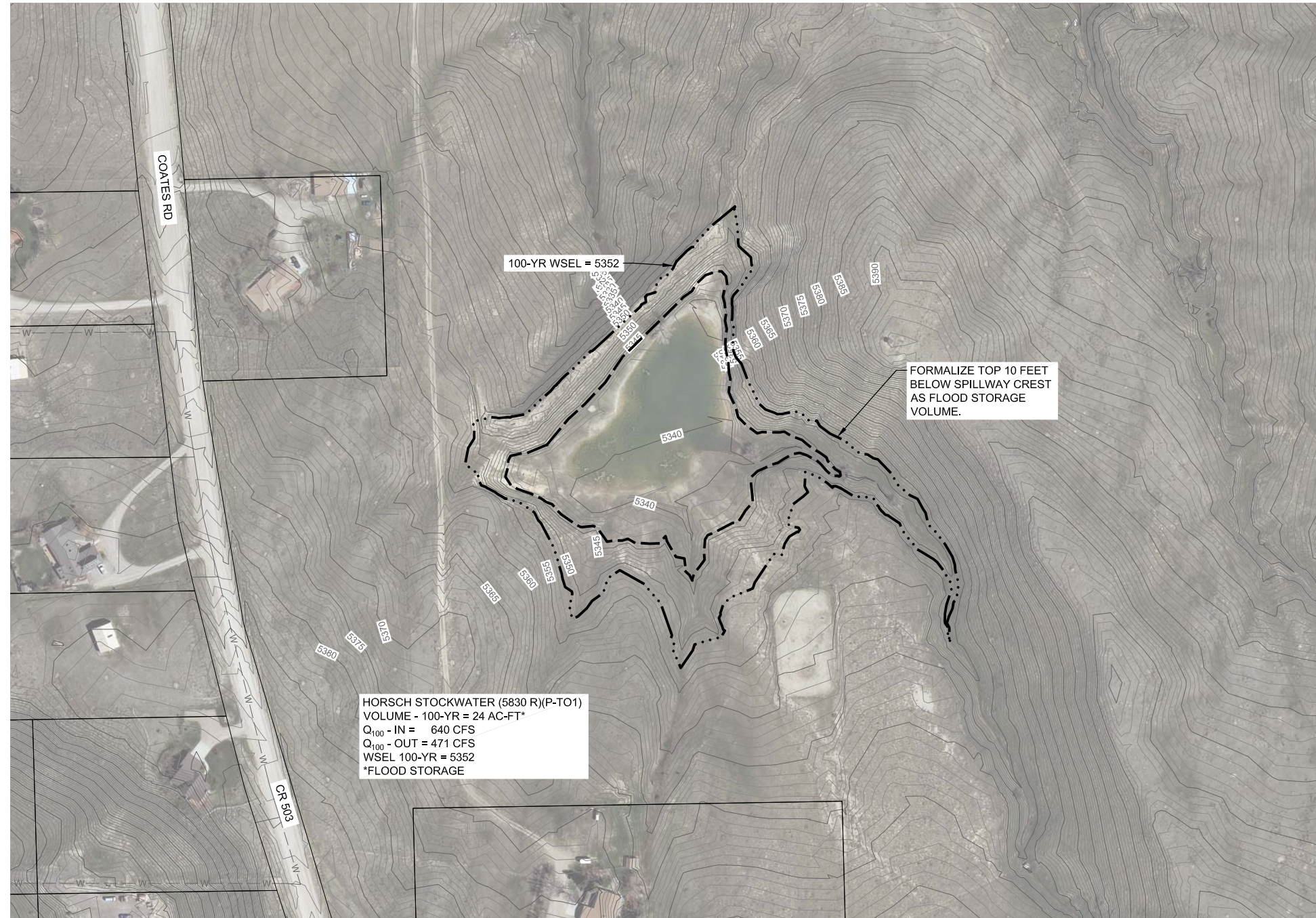
FIS Flood Zone

- A, AE, AO
- 0.2 Percent
- AE, Floodway



CASPER SWMMP PROJECT
CASPER, WYOMING

**COATES DRAW
PROPOSED
IMPROVEMENTS**



HORSCH STOCKWATER (5830 R)(P-TO1)
 VOLUME - 100-YR = 24 AC-FT*
 Q₁₀₀ - IN = 640 CFS
 Q₁₀₀ - OUT = 471 CFS
 WSEL 100-YR = 5352
 *FLOOD STORAGE

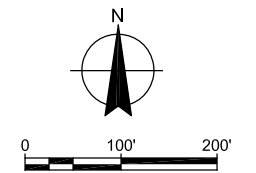
100-YR WSEL = 5352

FORMALIZE TOP 10 FEET
 BELOW SPILLWAY CREST
 AS FLOOD STORAGE
 VOLUME.

PLAN

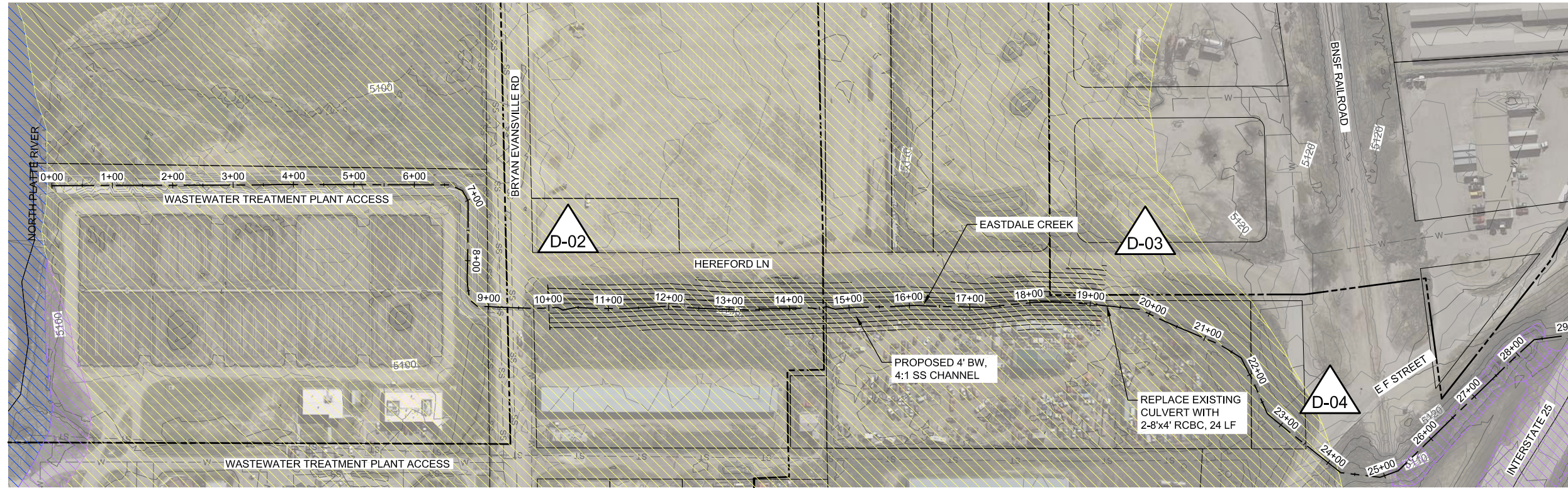
Legend

- City Limits
 - Design Point
 - Sanitary Sewers
 - Water
 - Existing Storm Sewer
 - Existing Parcel
 - Existing Storm Manhole
 - Existing Storm Inlet
 - Proposed Storm Sewer
 - Proposed Storm Manhole
 - Existing Contours
 - Proposed Contours
- FIS Flood Zone
- A, AE, AO
 - 0.2 Percent
 - AE, Floodway

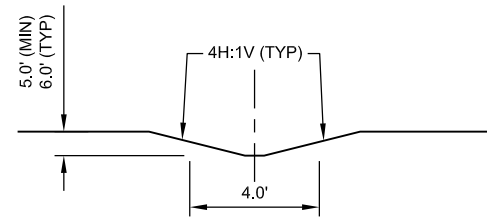


CASPER SWMMP PROJECT
 CASPER, WYOMING

**COATES DRAW
 PROPOSED
 IMPROVEMENTS**

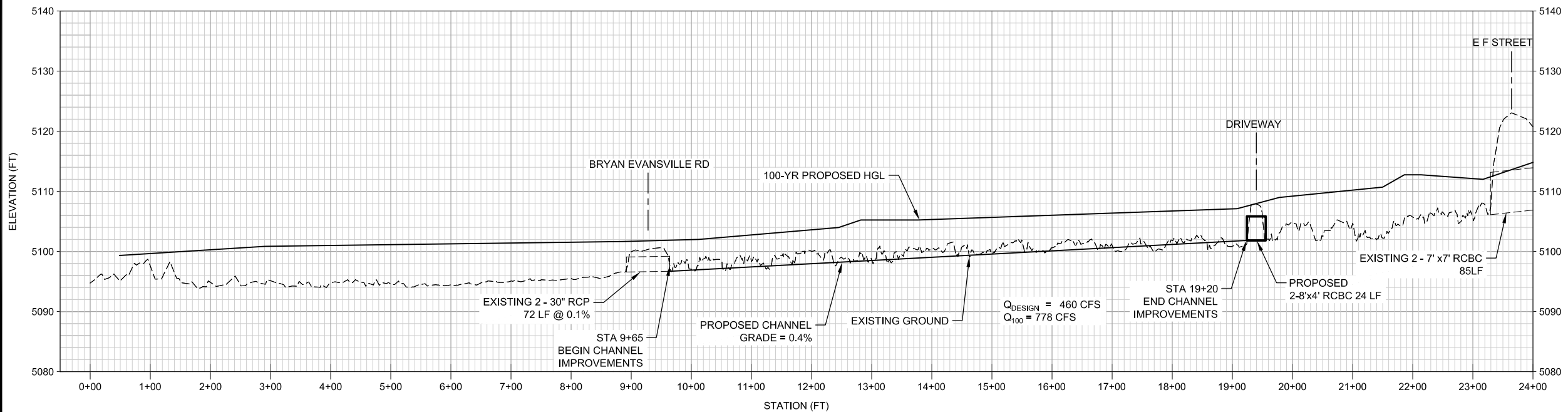


PLAN



TYPICAL GRASS-LINED CHANNEL

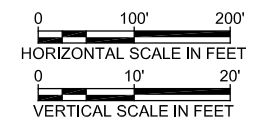
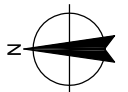
STA 9+70 TO 19+20 - BRYAN EVANSVILLE RD
NOT TO SCALE



PROFILE

Legend

- City Limits
- Design Point C-09
- Sanitary Sewers
- Water
- Existing Storm Sewer
- Existing Parcel
- Existing Storm Manhole
- Existing Storm Inlet
- Proposed Storm Sewer
- Proposed Storm Manhole
- Existing Contours
- Proposed Contours
- FIS Flood Zone**
 - A, AE, AO
 - 0.2 Percent
 - AE, Floodway

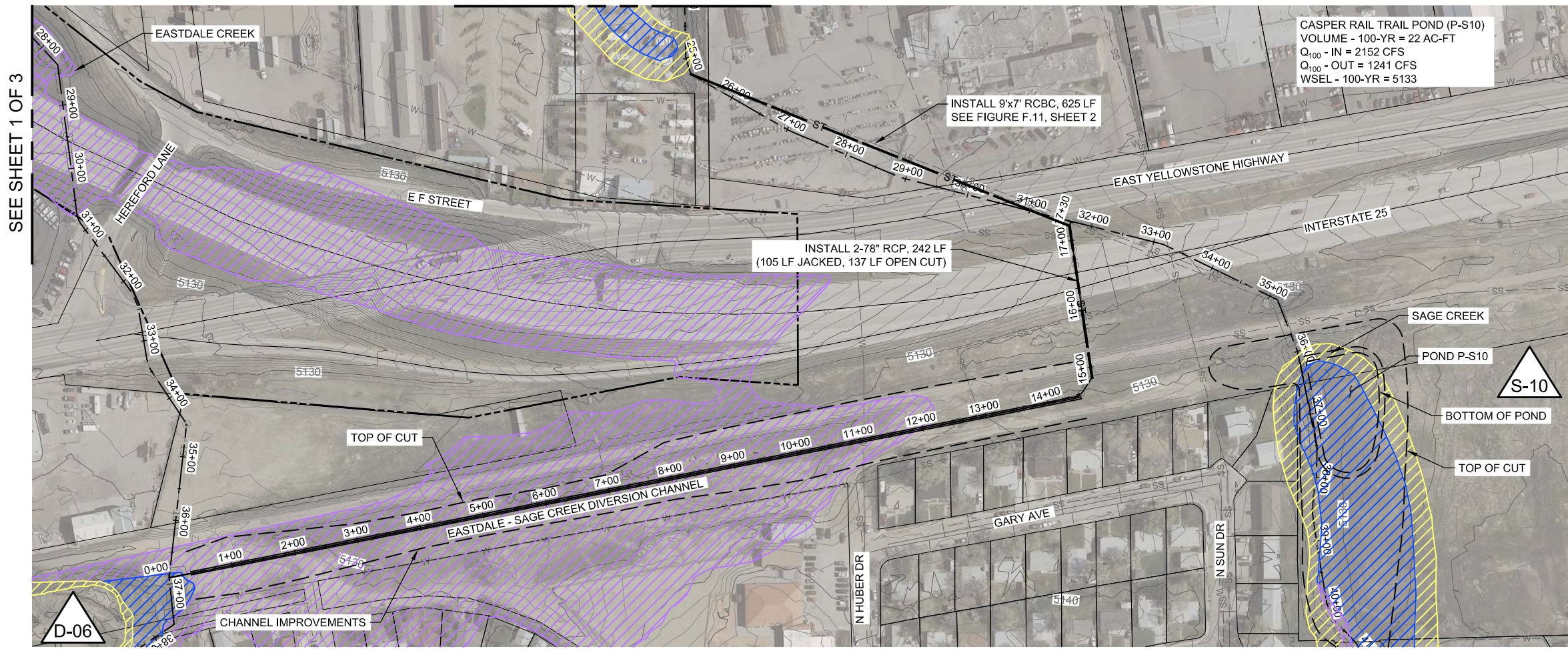


CASPER SWMMP PROJECT
CASPER, WYOMING

**EASTDALE CREEK
PROPOSED
IMPROVEMENTS**

SEE SHEET 2 OF 3

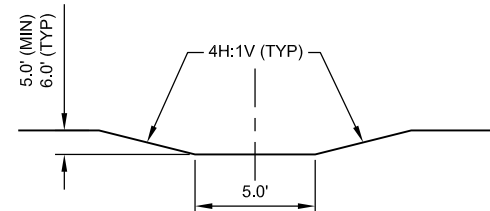
SEE SHEET 1 OF 3



CASPER RAIL TRAIL POND (P-S10)
 VOLUME - 100-YR = 22 AC-FT
 Q₁₀₀ - IN = 2152 CFS
 Q₁₀₀ - OUT = 1241 CFS
 WSEL - 100-YR = 5133

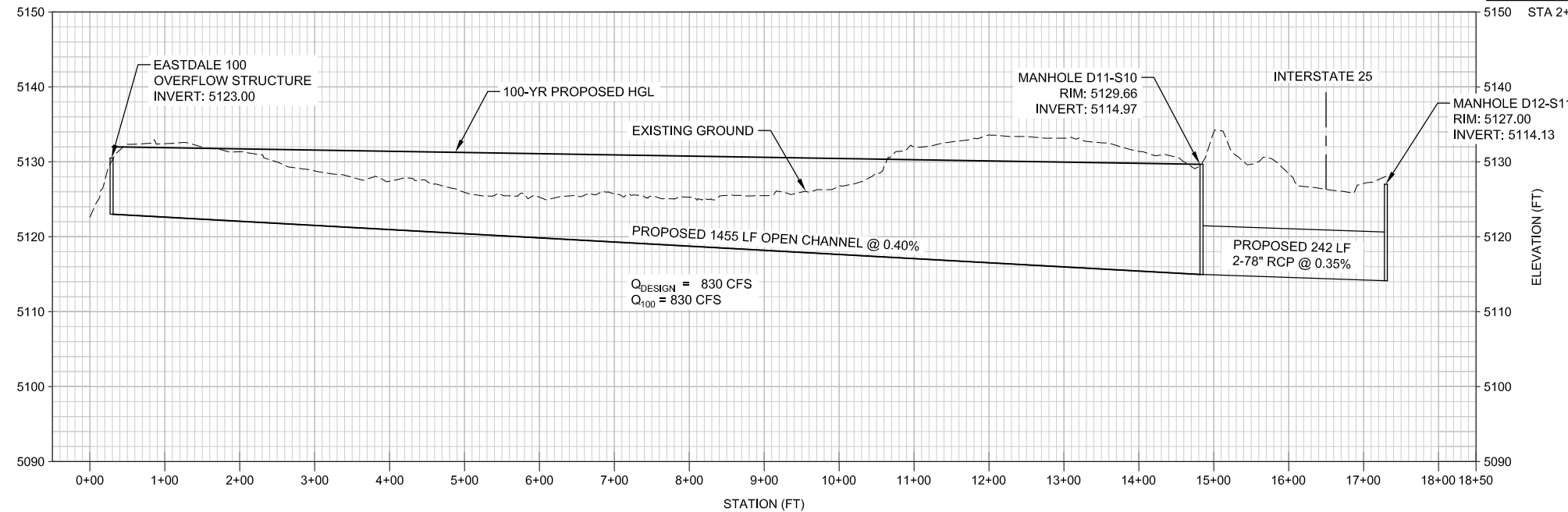
INSTALL 2-78" RCP, 242 LF
 (105 LF JACKED, 137 LF OPEN CUT)

PLAN



TYPICAL CHANNEL SECTION

STA 2+50 TO 17+29 - EASTDALE - SAGE DIVERSION CHANNEL NOT TO SCALE



PROFILE - EASTDALE - SAGE CREEK DIVERSION CHANNEL

Legend

- City Limits
- Design Point C-09
- Sanitary Sewers
- Water
- Existing Storm Sewer
- Existing Parcel
- Existing Storm Manhole
- Existing Storm Inlet
- Proposed Storm Sewer
- Proposed Storm Manhole
- Existing Contours
- Proposed Contours

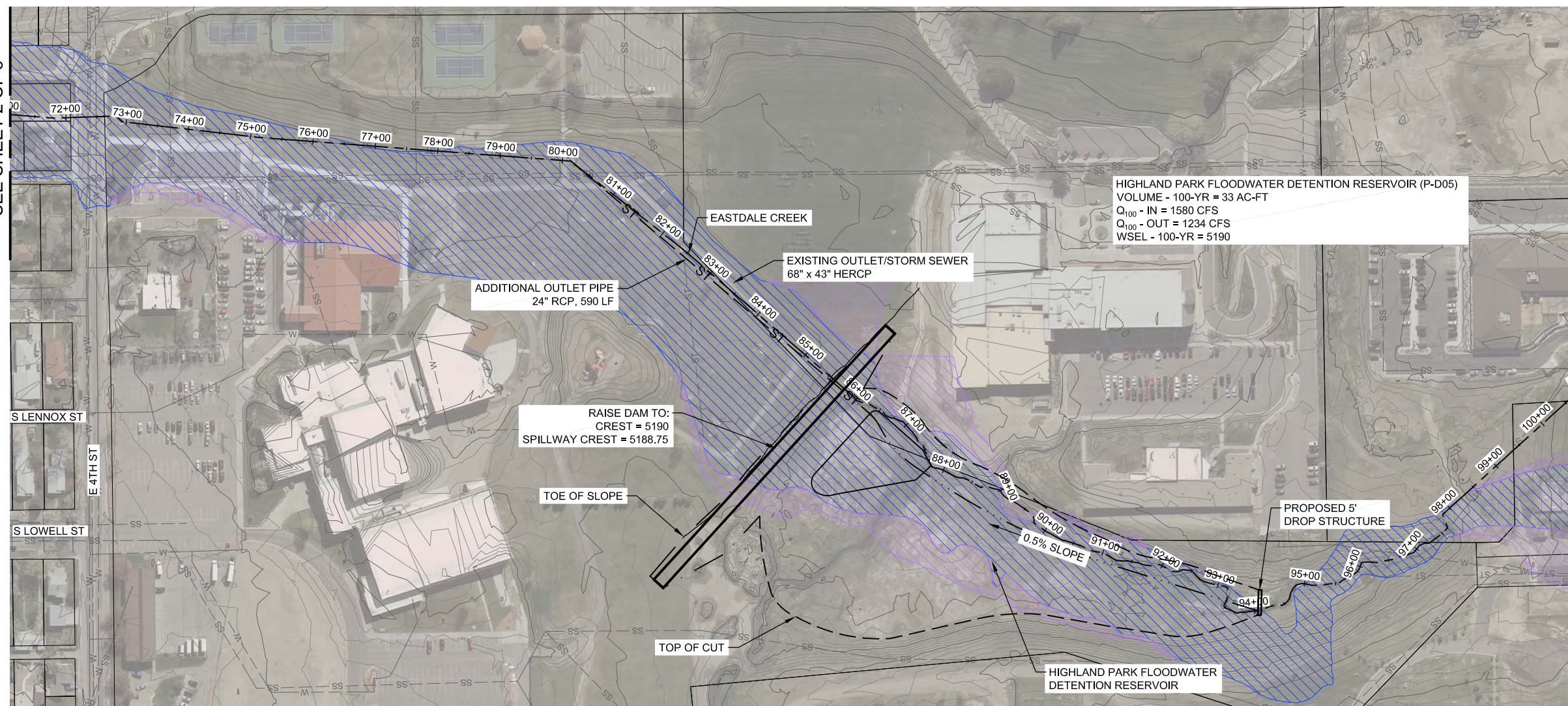
FIS Flood Zone

- A, AE, AO
- 0.2 Percent
- AE, Floodway

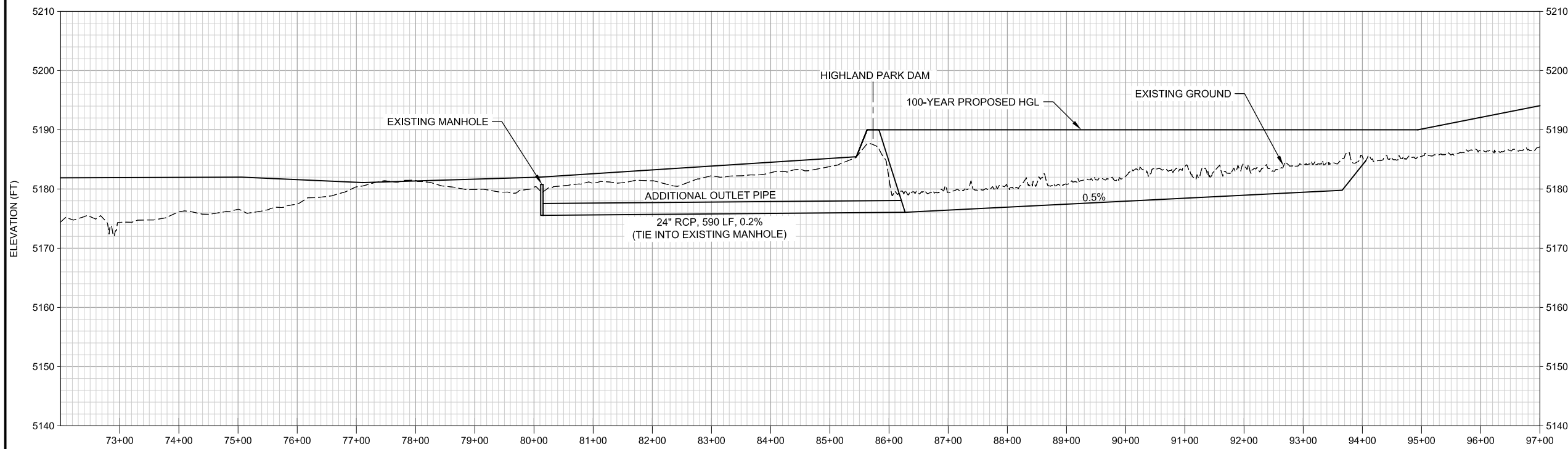
CASPER SWMP PROJECT
 CASPER, WYOMING

**EASTDALE CREEK
 PROPOSED
 IMPROVEMENTS**

FIGURE F.3 SHEET 2 OF 3



PLAN



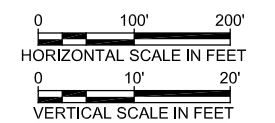
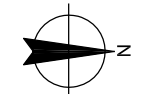
PROFILE

Legend

- City Limits
- Design Point
- Sanitary Sewers
- Water
- Existing Storm Sewer
- Existing Parcel
- Existing Storm Manhole
- Existing Storm Inlet
- Proposed Storm Sewer
- Proposed Storm Manhole
- Existing Contours
- Proposed Contours

FIS Flood Zone

- A, AE, AO
- 0.2 Percent
- AE, Floodway



CASPER SWMP PROJECT
CASPER, WYOMING

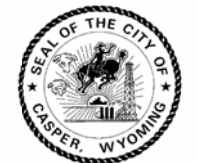
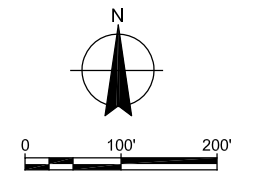
**EASTDALE CREEK
PROPOSED
IMPROVEMENTS**



PLAN

Legend

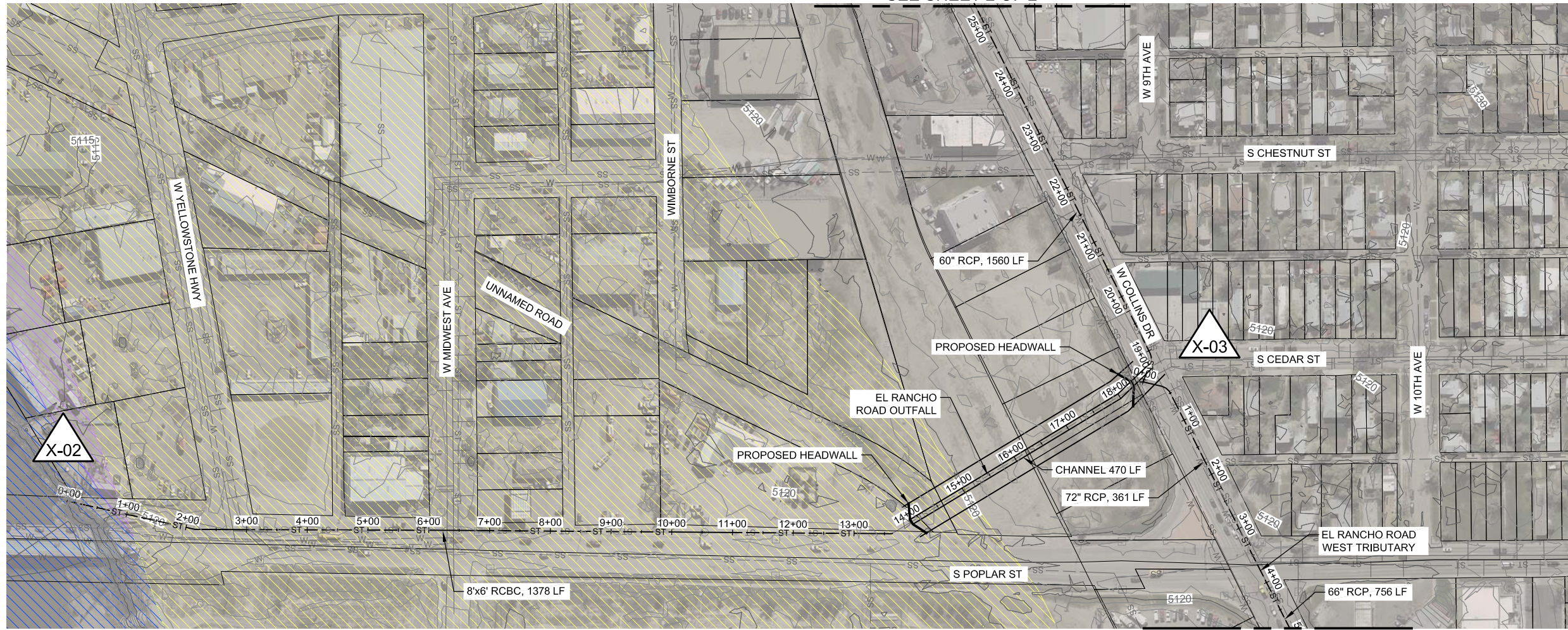
- City Limits
 - Design Point
 - Sanitary Sewers
 - Water
 - Existing Storm Sewer
 - Existing Parcel
 - Existing Storm Manhole
 - Existing Storm Inlet
 - Proposed Storm Sewer
 - Proposed Storm Manhole
 - Existing Contours
 - Proposed Contours
- FIS Flood Zone
- A, AE, AO
 - 0.2 Percent
 - AE, Floodway



CASPER SWMMP PROJECT
CASPER, WYOMING

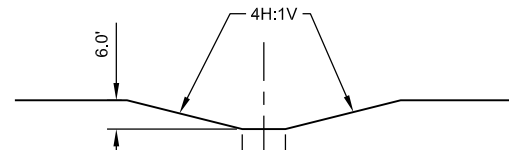
**EASTRIDGE OUTFALL
PROPOSED
IMPROVEMENTS**

SEE SHEET 2 OF 2



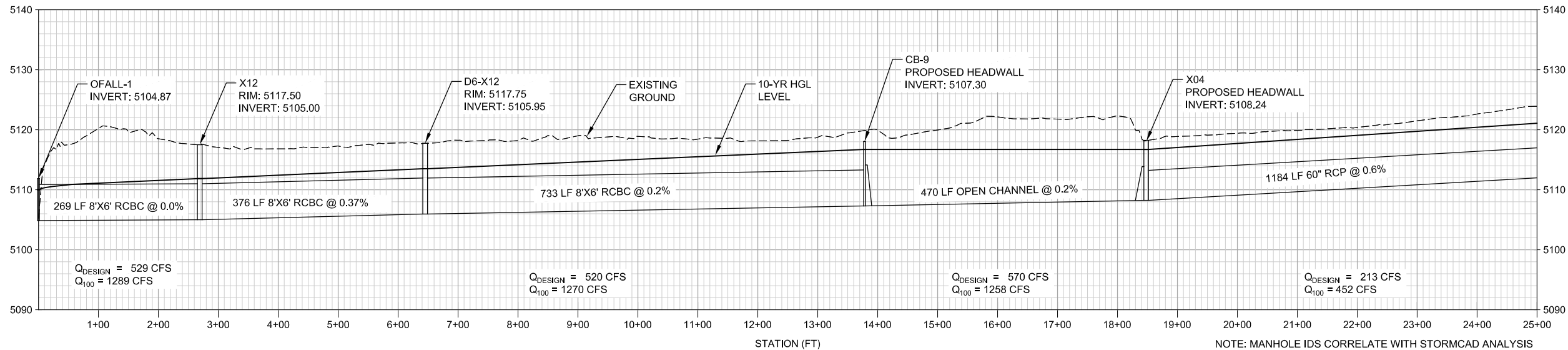
SEE SHEET 2 OF 2

PLAN



TYPICAL CHANNEL SECTION

STA 14+00 TO STA 18+70
NOT TO SCALE

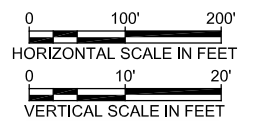
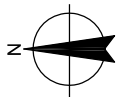


PROFILE - EL RANCHO ROAD OUTFALL

NOTE: MANHOLE IDS CORRELATE WITH STORMCAD ANALYSIS

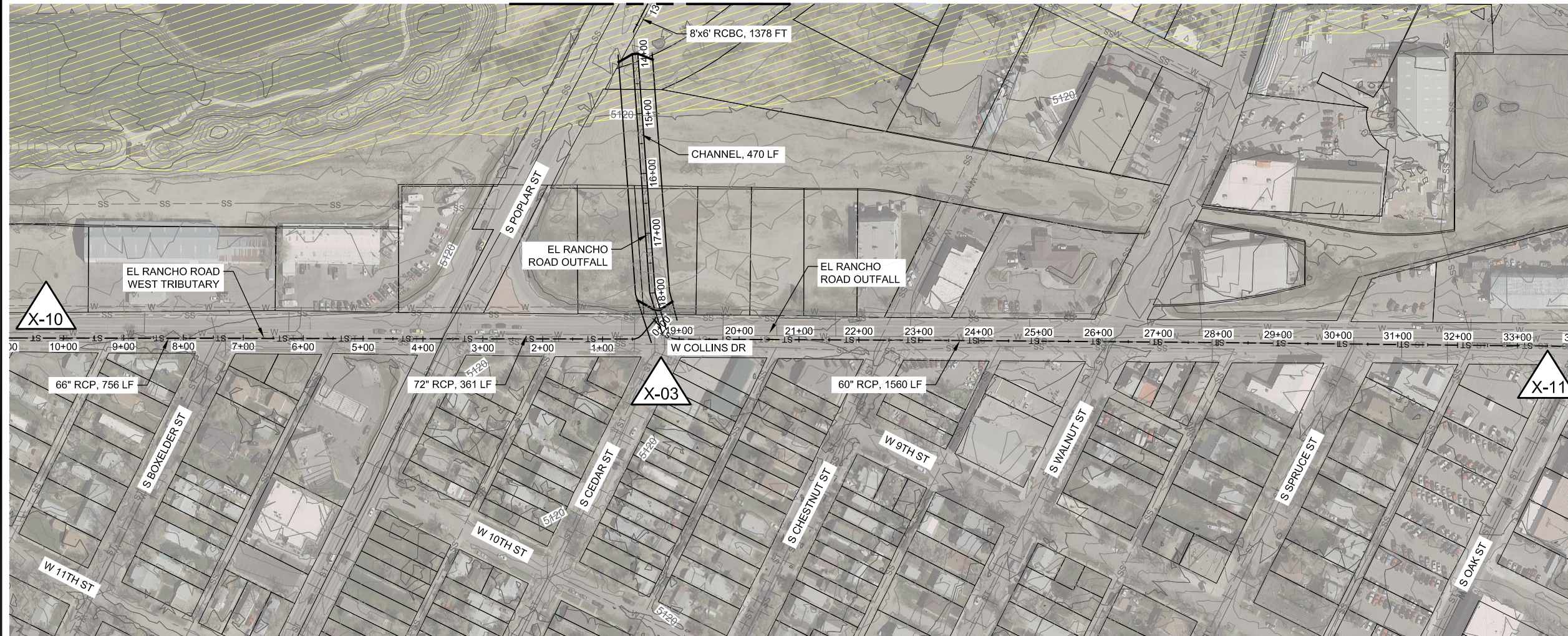
Legend

- City Limits
 - Design Point
 - C-09
 - Sanitary Sewers
 - Water
 - Existing Storm Sewer
 - Existing Parcel
 - Existing Storm Manhole
 - Existing Storm Inlet
 - Proposed Storm Sewer
 - Proposed Storm Manhole
 - Existing Contours
 - Proposed Contours
- FIS Flood Zone**
- A, AE, AO
 - 0.2 Percent
 - AE, Floodway

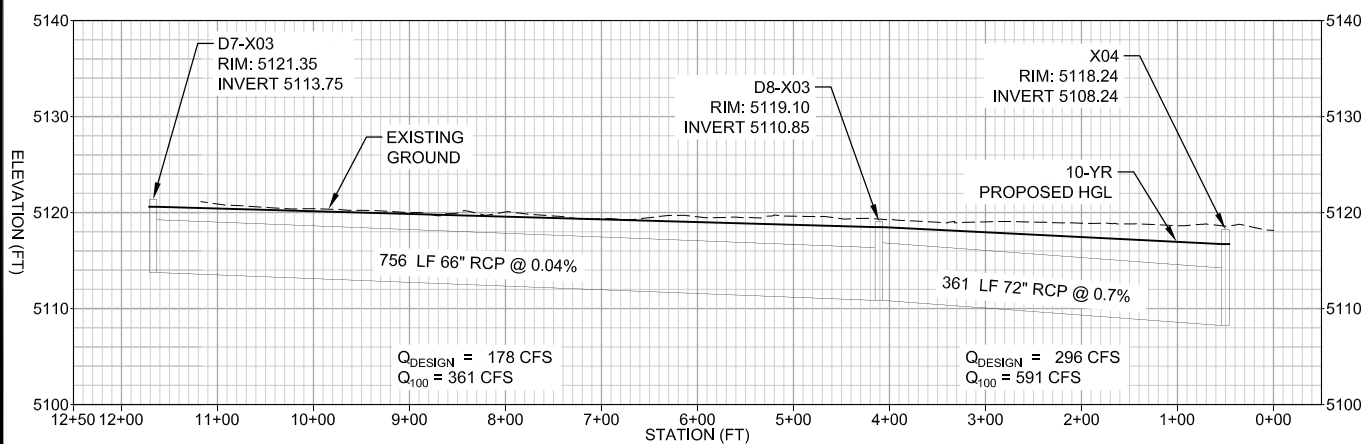


CASPER SWMMP PROJECT
CASPER, WYOMING
EL RANCHO ROAD
OUTFALL
PROPOSED
IMPROVEMENTS

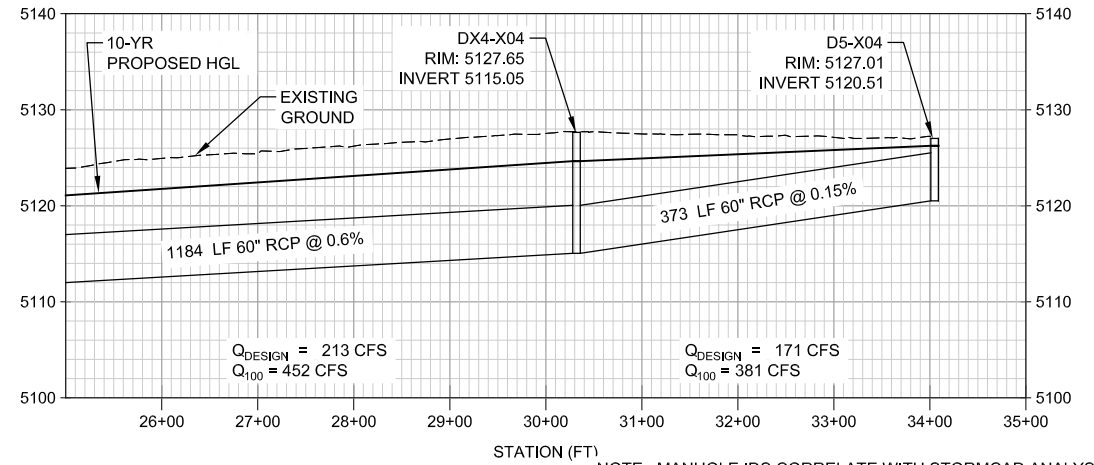
SEE SHEET 1 OF 2



PLAN



PROFILE - EL RANCHO ROAD WEST TRIBUTARY



PROFILE - EL RANCHO ROAD OUTFALL

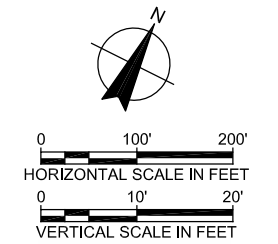
NOTE: MANHOLE IDS CORRELATE WITH STORMCAD ANALYSIS

Legend

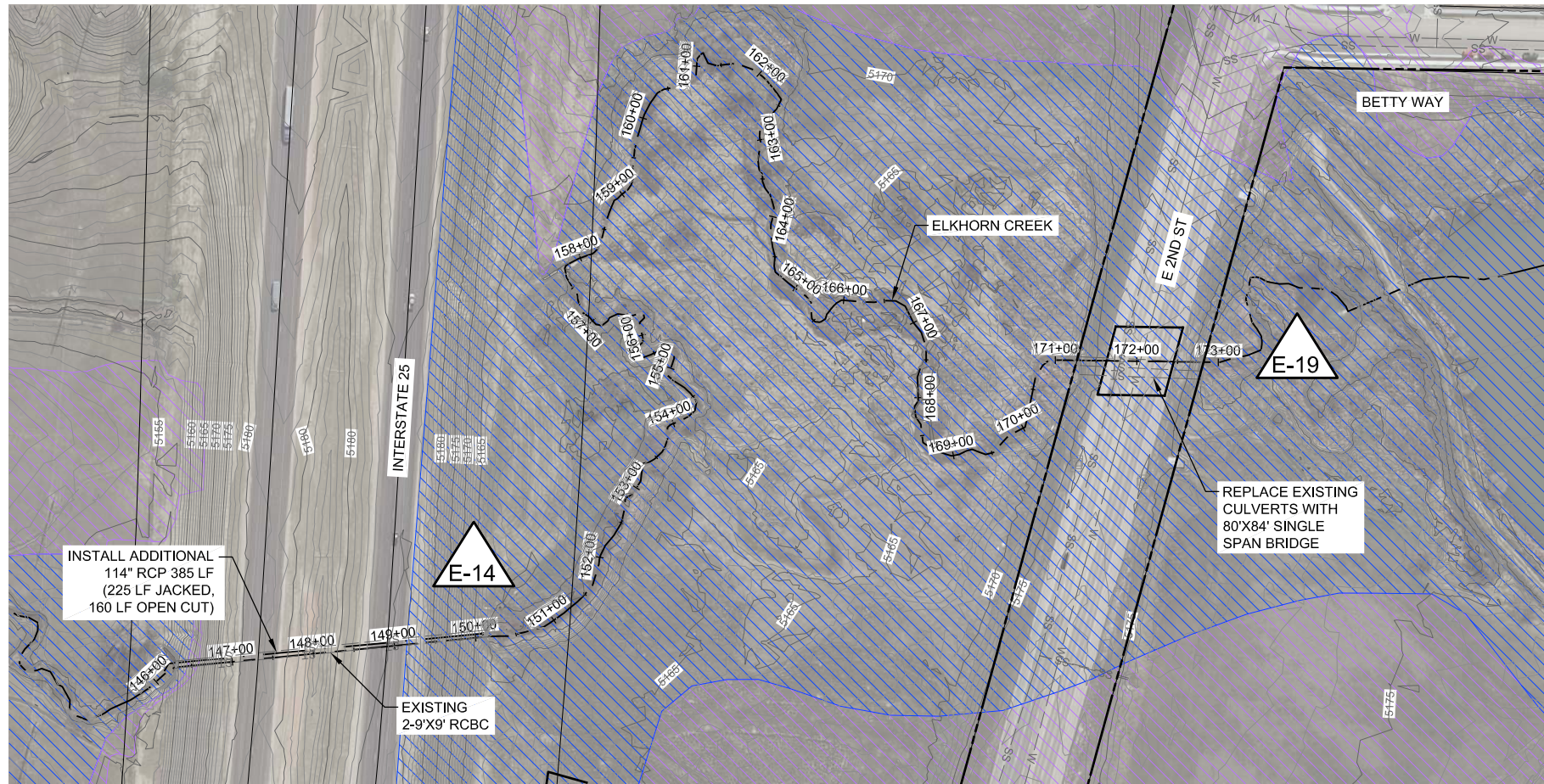
- City Limits
- Design Point
- Sanitary Sewers
- Water
- Existing Storm Sewer
- Existing Parcel
- Existing Storm Manhole
- Existing Storm Inlet
- Proposed Storm Sewer
- Proposed Storm Manhole
- Existing Contours
- Proposed Contours

FIS Flood Zone

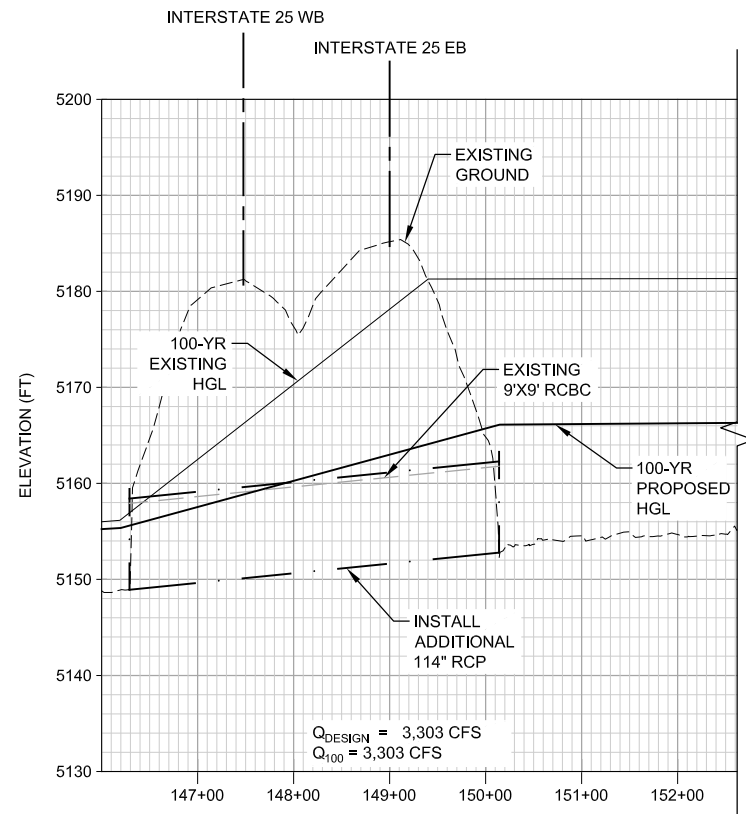
- A, AE, AO
- 0.2 Percent
- AE, Floodway



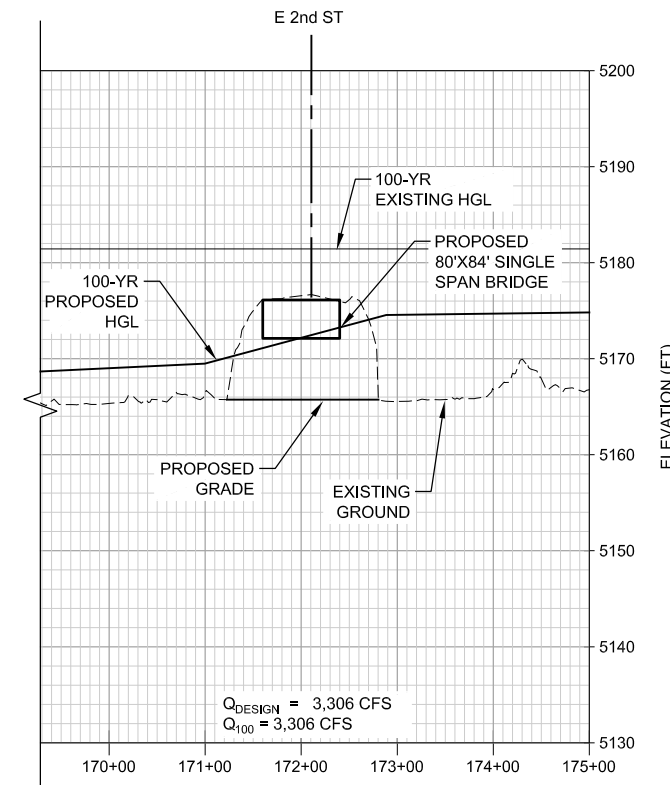
CASPER SWMMP PROJECT
 CASPER, WYOMING
**EL RANCHO ROAD
 OUTFALL
 PROPOSED
 IMPROVEMENTS**



PLAN



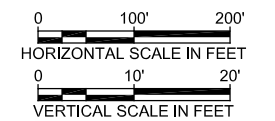
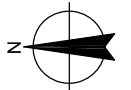
PROFILE



PROFILE

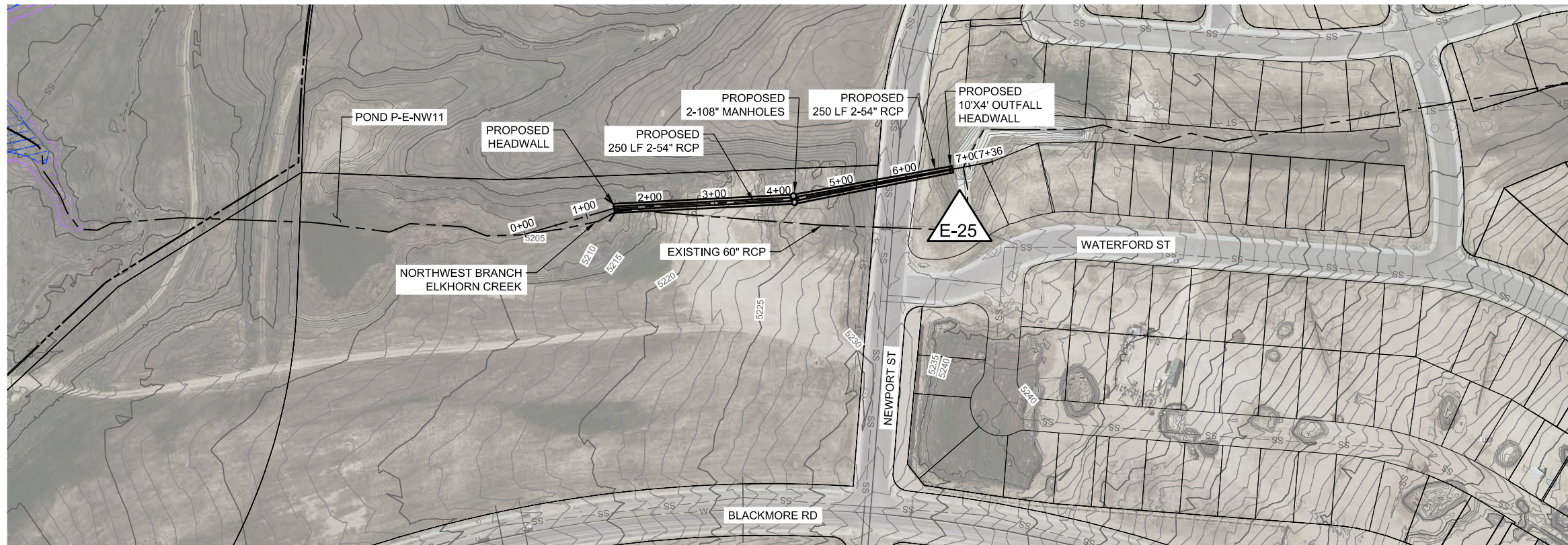
Legend

- City Limits
 - Design Point
 - Sanitary Sewers
 - Water
 - Existing Storm Sewer
 - Existing Parcel
 - Existing Storm Manhole
 - Existing Storm Inlet
 - Proposed Storm Sewer
 - Proposed Storm Manhole
 - Existing Contours
 - Proposed Contours
- FIS Flood Zone**
- A, AE, AO
 - 0.2 Percent
 - AE, Floodway

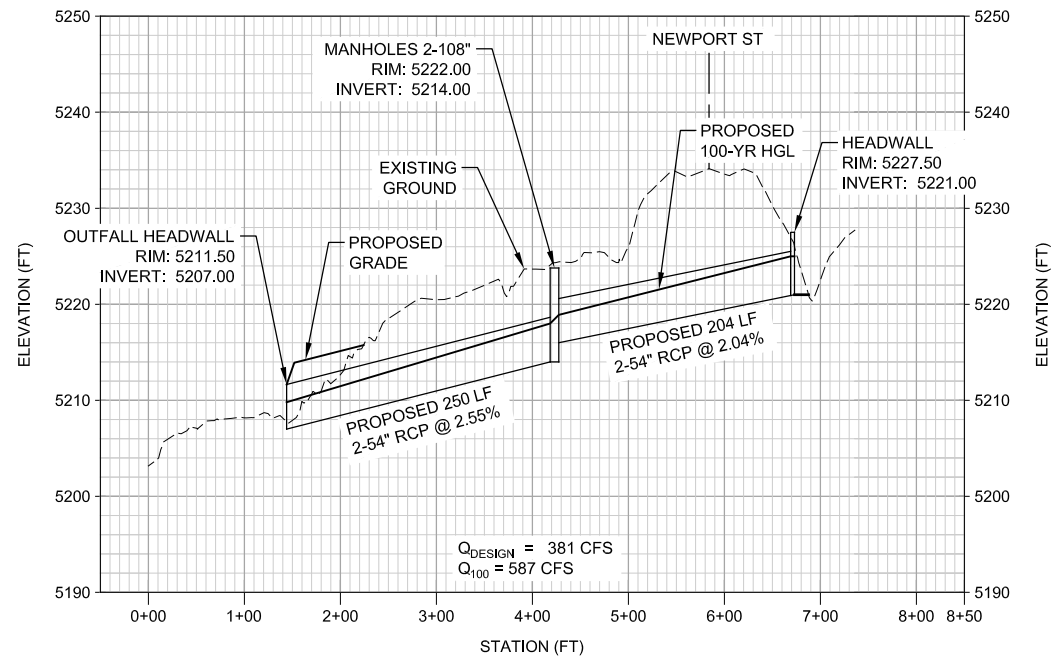


CASPER SWMP PROJECT
CASPER, WYOMING

**ELKHORN CREEK
PROPOSED
IMPROVEMENTS**



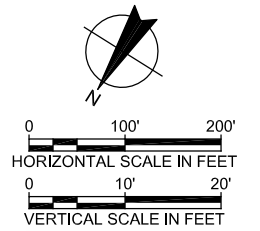
PLAN



PROFILE

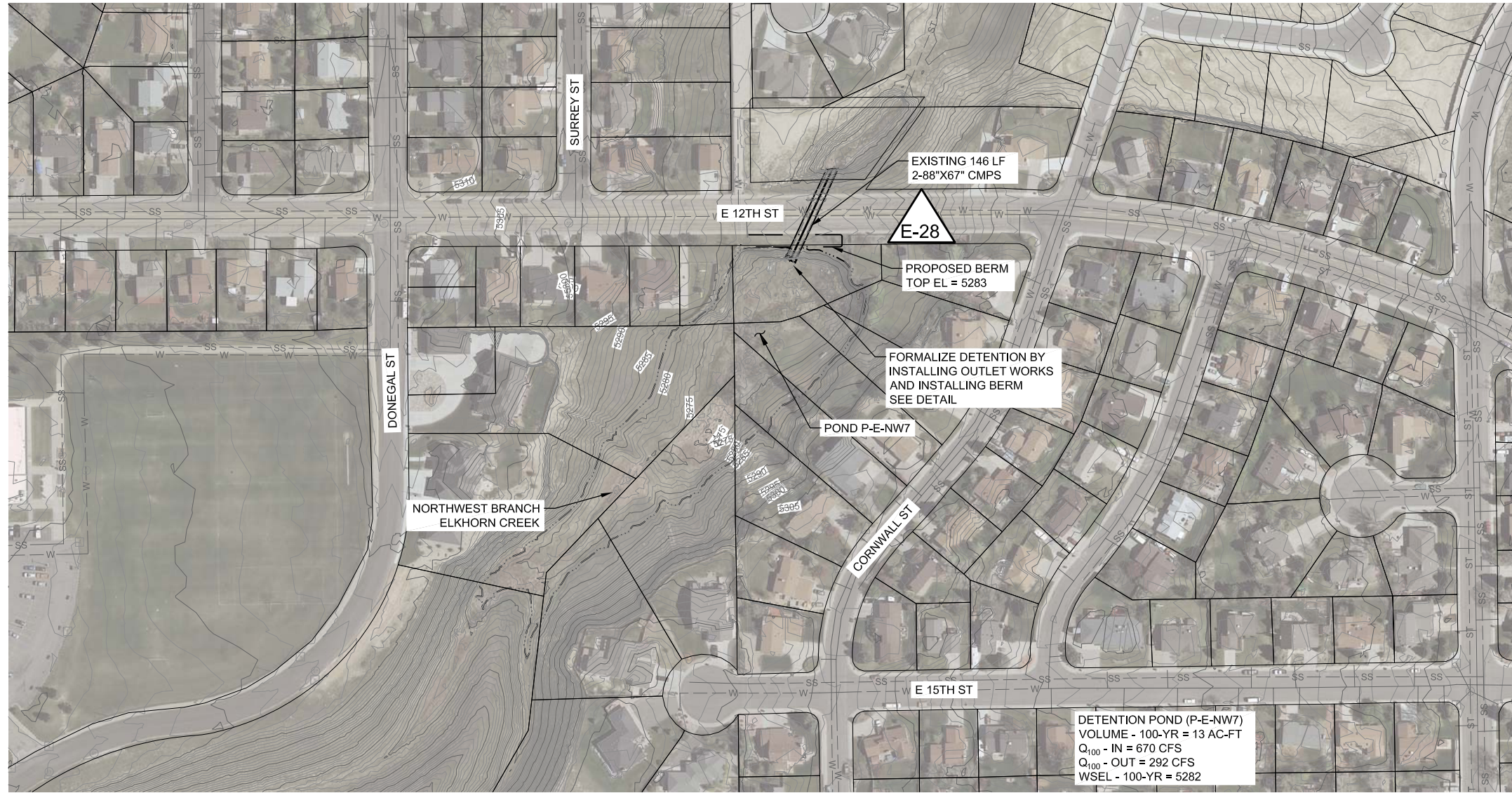
Legend

- City Limits
 - Design Point
C-09
 - Sanitary Sewers
 - Water
 - Existing Storm Sewer
 - Existing Parcel
 - Existing Storm Manhole
 - Existing Storm Inlet
 - Proposed Storm Sewer
 - Proposed Storm Manhole
 - Existing Contours
 - Proposed Contours
- FIS Flood Zone
- A, AE, AO
 - 0.2 Percent
 - AE, Floodway

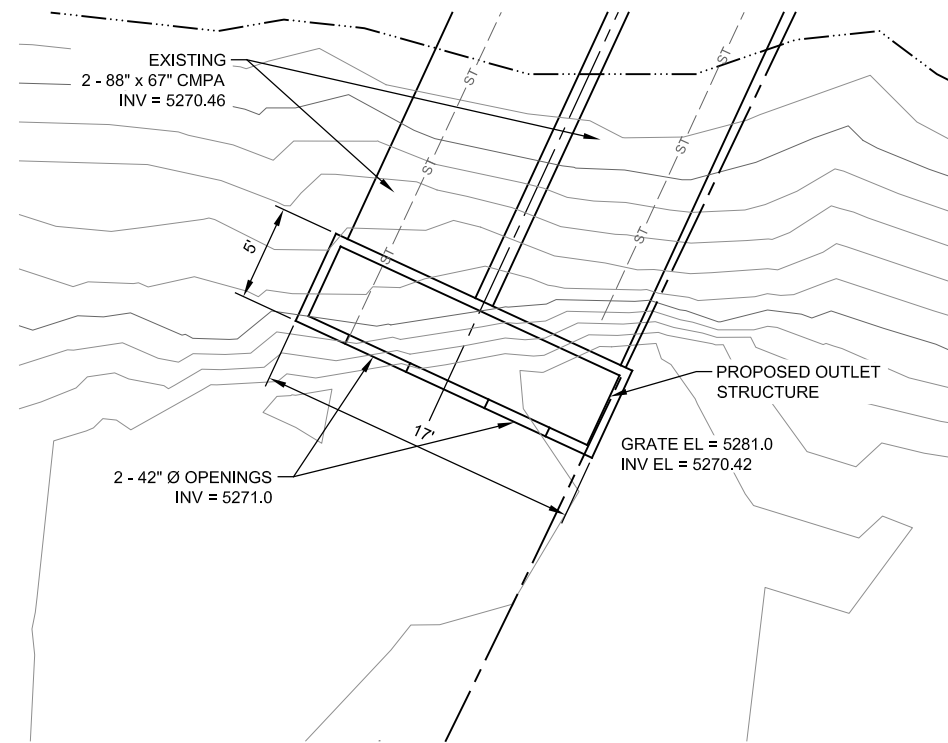


CASPER SWMP PROJECT
CASPER, WYOMING

**ELKHORN CREEK
PROPOSED
IMPROVEMENTS**



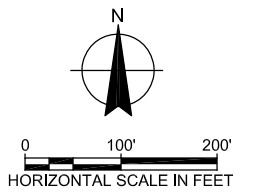
PLAN



DETAIL

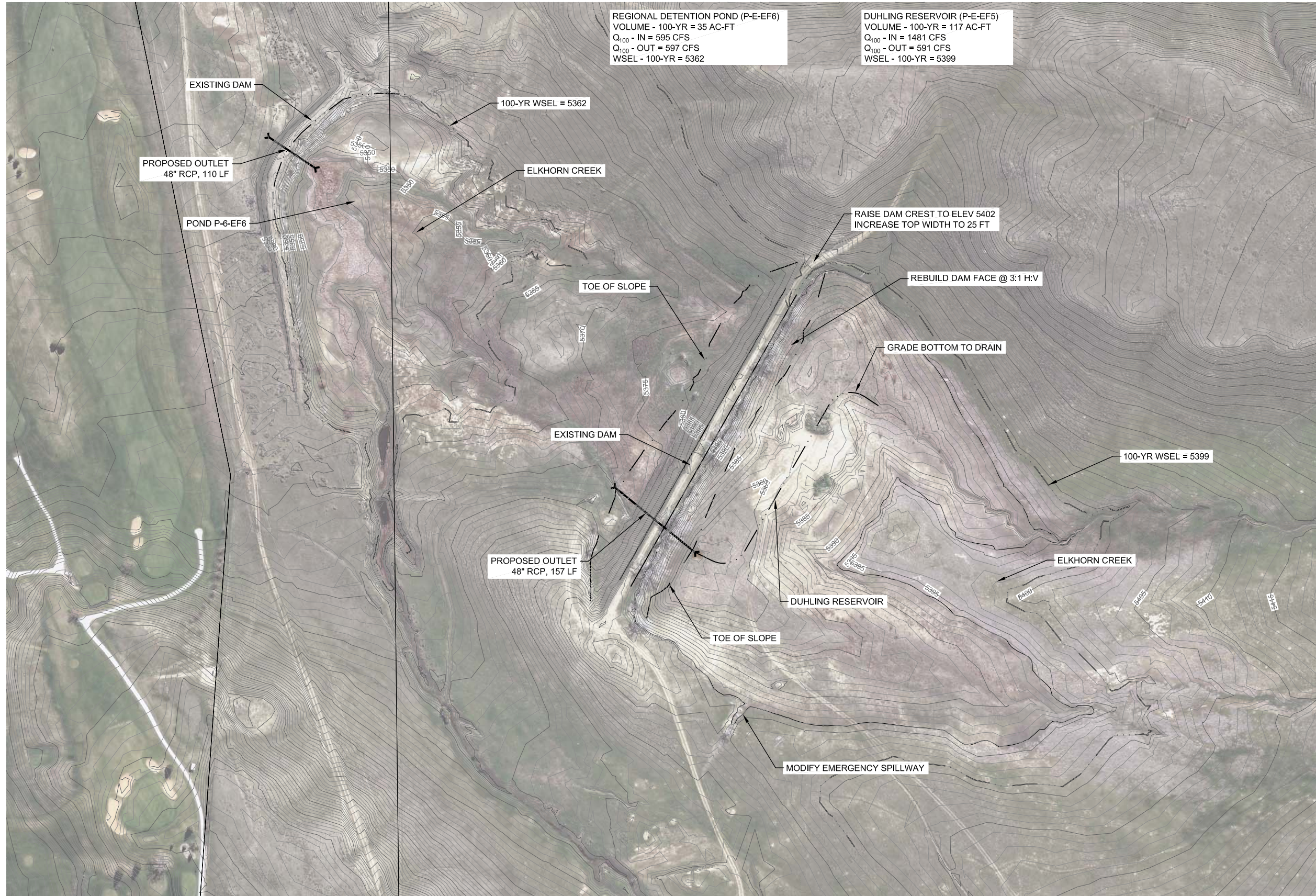
Legend

- City Limits
 - Design Point
 - Sanitary Sewers
 - Water
 - Existing Storm Sewer
 - Existing Parcel
 - Existing Storm Manhole
 - Existing Storm Inlet
 - Proposed Storm Sewer
 - Proposed Storm Manhole
 - Existing Contours
 - Proposed Contours
- FIS Flood Zone
- A, AE, AO
 - 0.2 Percent
 - AE, Floodway




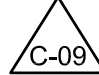






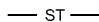



CASPER SWMP PROJECT
CASPER, WYOMING

ELKHORN CREEK
PROPOSED
IMPROVEMENTS






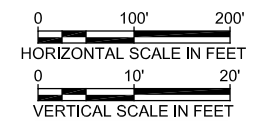
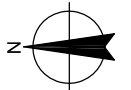
PLAN

Legend

-  City Limits
-  Design Point
-  Sanitary Sewers
-  Water
-  Existing Storm Sewer
-  Existing Parcel
-  Existing Storm Manhole
-  Existing Storm Inlet
-  Proposed Storm Sewer
-  Proposed Storm Manhole
-  Existing Contours
-  Proposed Contours

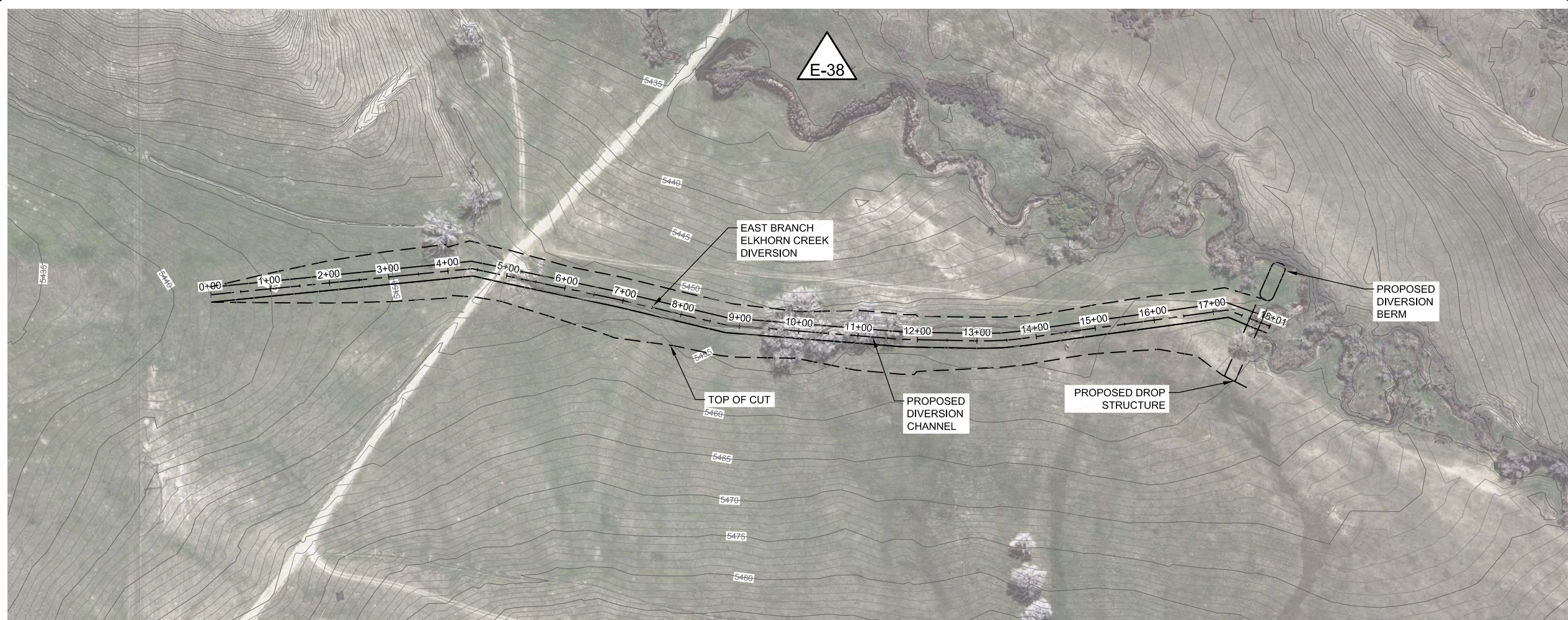
FIS Flood Zone

-  A, AE, AO
-  0.2 Percent
-  AE, Floodway

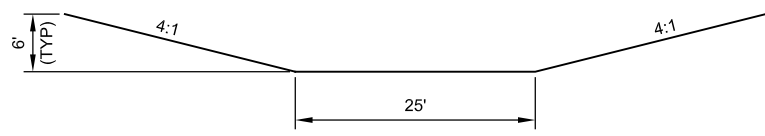


CASPER SWMP PROJECT
CASPER, WYOMING

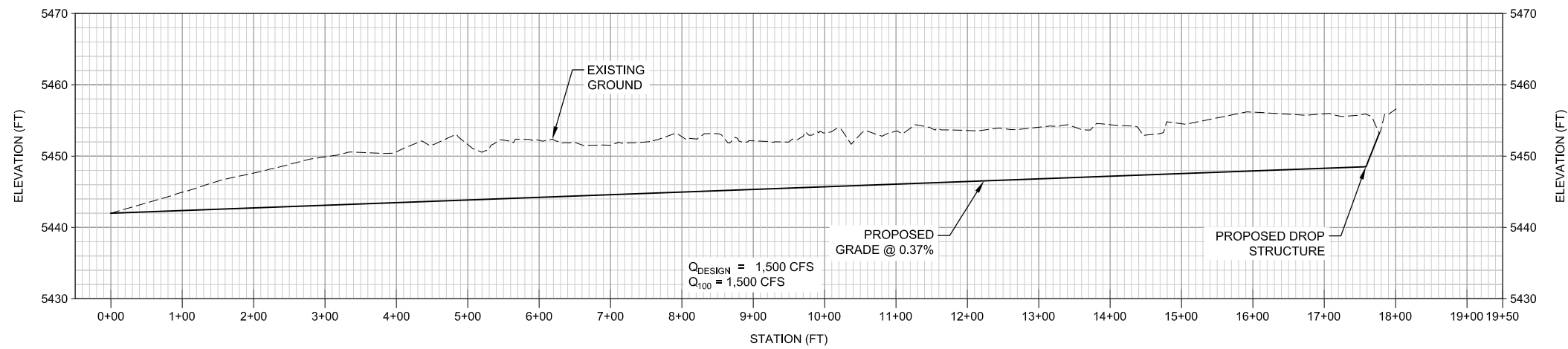
**ELKHORN CREEK
PROPOSED
IMPROVEMENTS**



PLAN



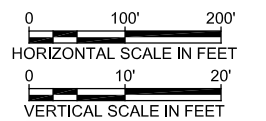
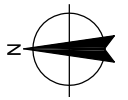
TYPICAL GRASS-LINED CHANNEL
NOT TO SCALE



PROFILE

Legend

- City Limits
 - Design Point
 - Sanitary Sewers
 - Water
 - Existing Storm Sewer
 - Existing Parcel
 - Existing Storm Manhole
 - Existing Storm Inlet
 - Proposed Storm Sewer
 - Proposed Storm Manhole
 - Existing Contours
 - Proposed Contours
- FIS Flood Zone**
- A, AE, AO
 - 0.2 Percent
 - AE, Floodway



CASPER SWMMP PROJECT
CASPER, WYOMING

**ELKHORN CREEK
PROPOSED
IMPROVEMENTS**